

Leveling Horizons using Photoshop's "Measure Tool" or "Ruler Tool"

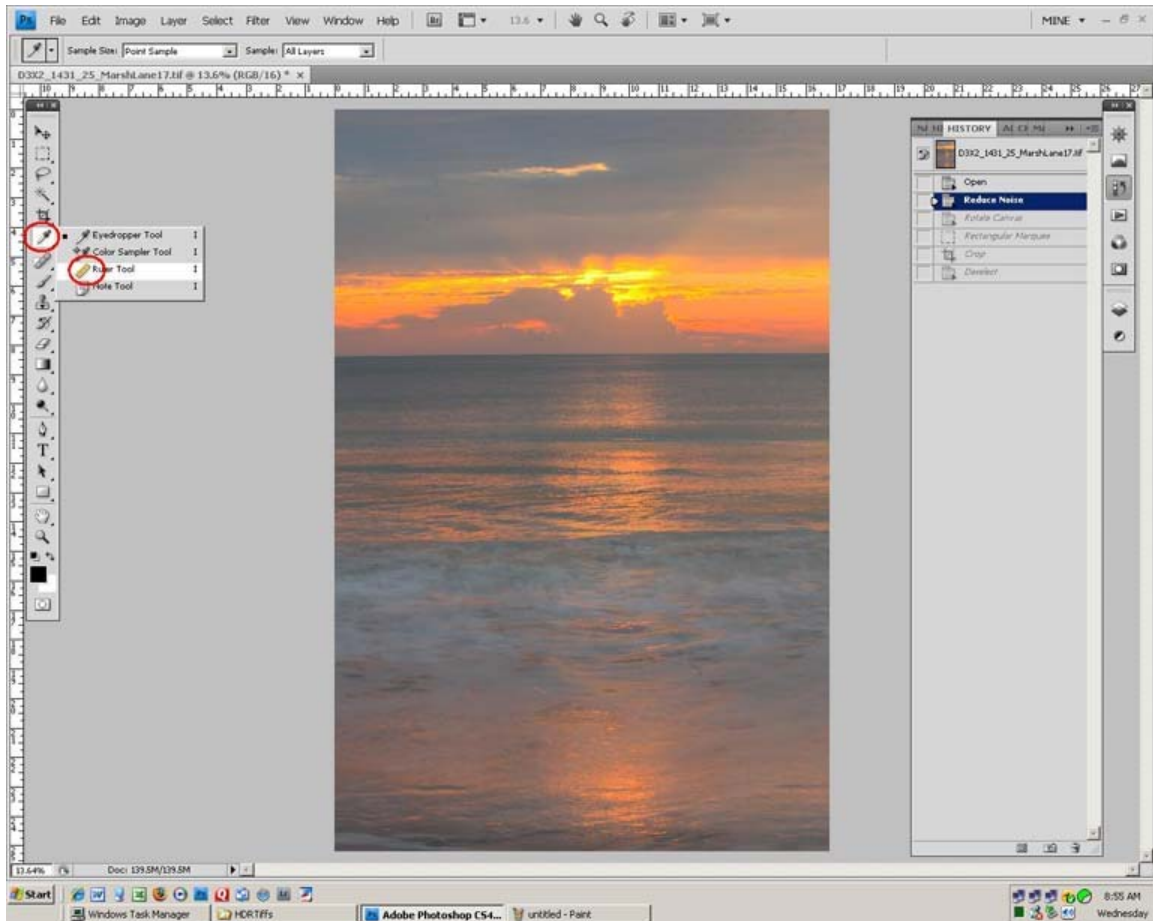
If you think your horizon may not be level, or know it isn't and want to fix it, PhotoShop has the answer: the Measure Tool.

Open the image in Photoshop.

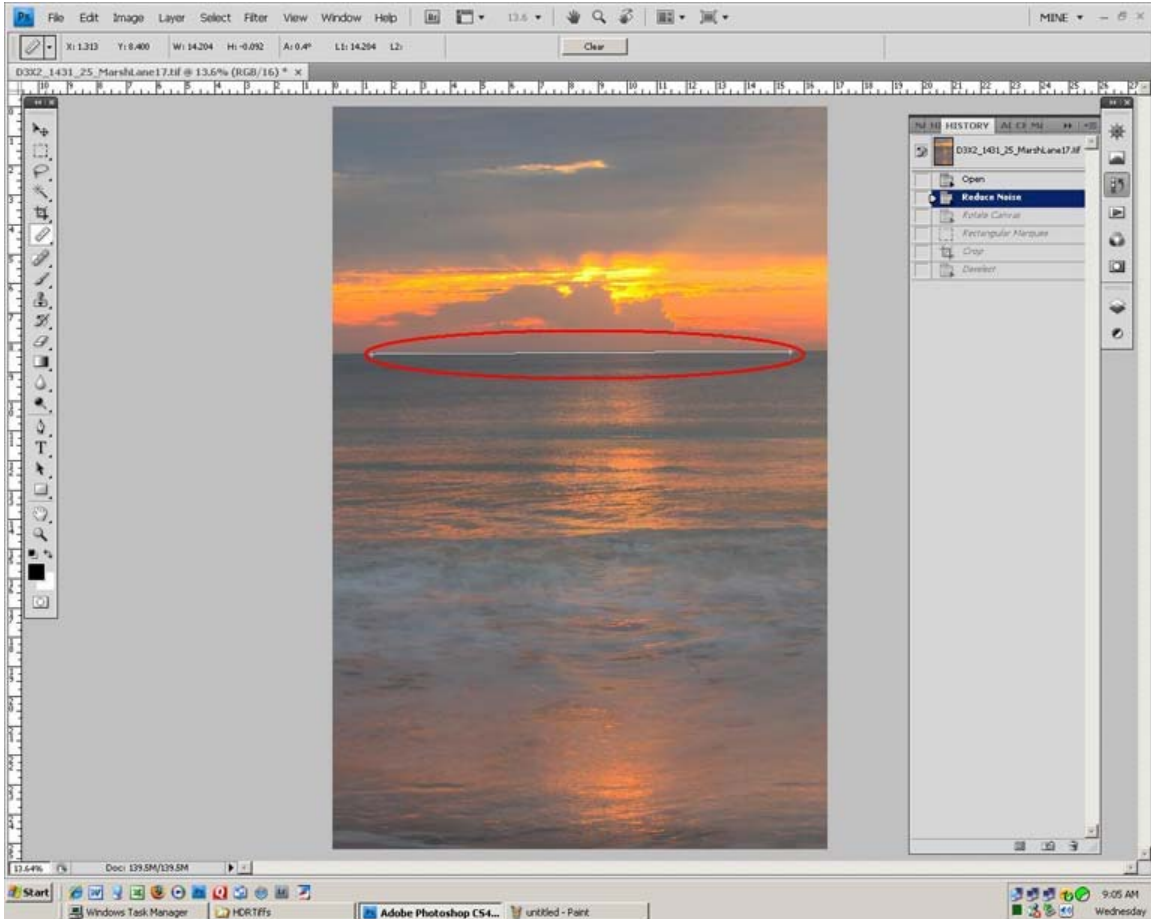
Right-click on the EyeDropper Tool.

On the dropdown, click on the Measure Tool (in some versions of Photoshop, this is called the "Ruler Tool"). The cursor will change to a ruler with small "x".

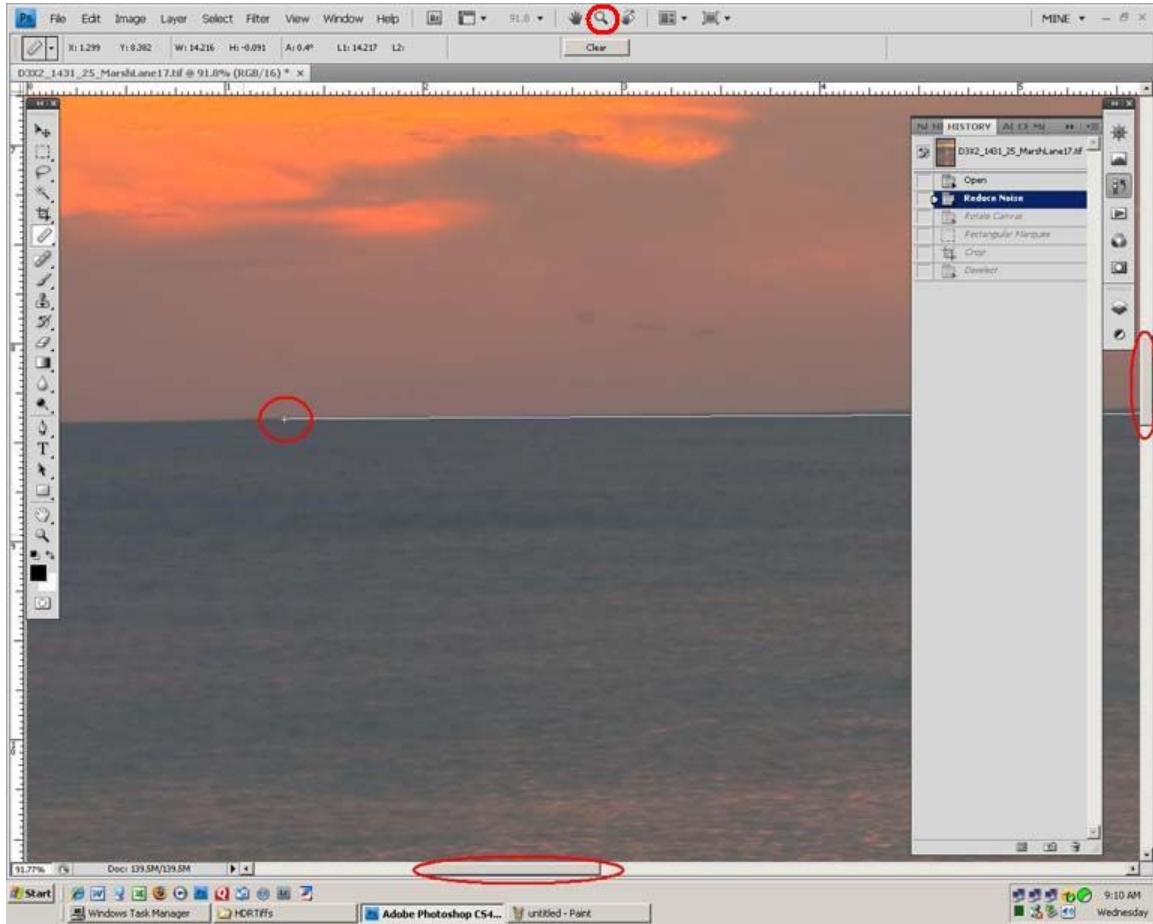
Click 'Caps Lock' to change the cursor to crosshairs.



Use that cursor to draw a line on the horizon, or any line you want to be horizontal. The line need not be all the way across the image, but take care that the ends of the line are equidistant from the edges of the image to minimize the effects of non-linearity in the lens. Or, you can trace a vertical line on anything you know should be vertical, such as a building (assuming that you have already corrected any perspective problems).

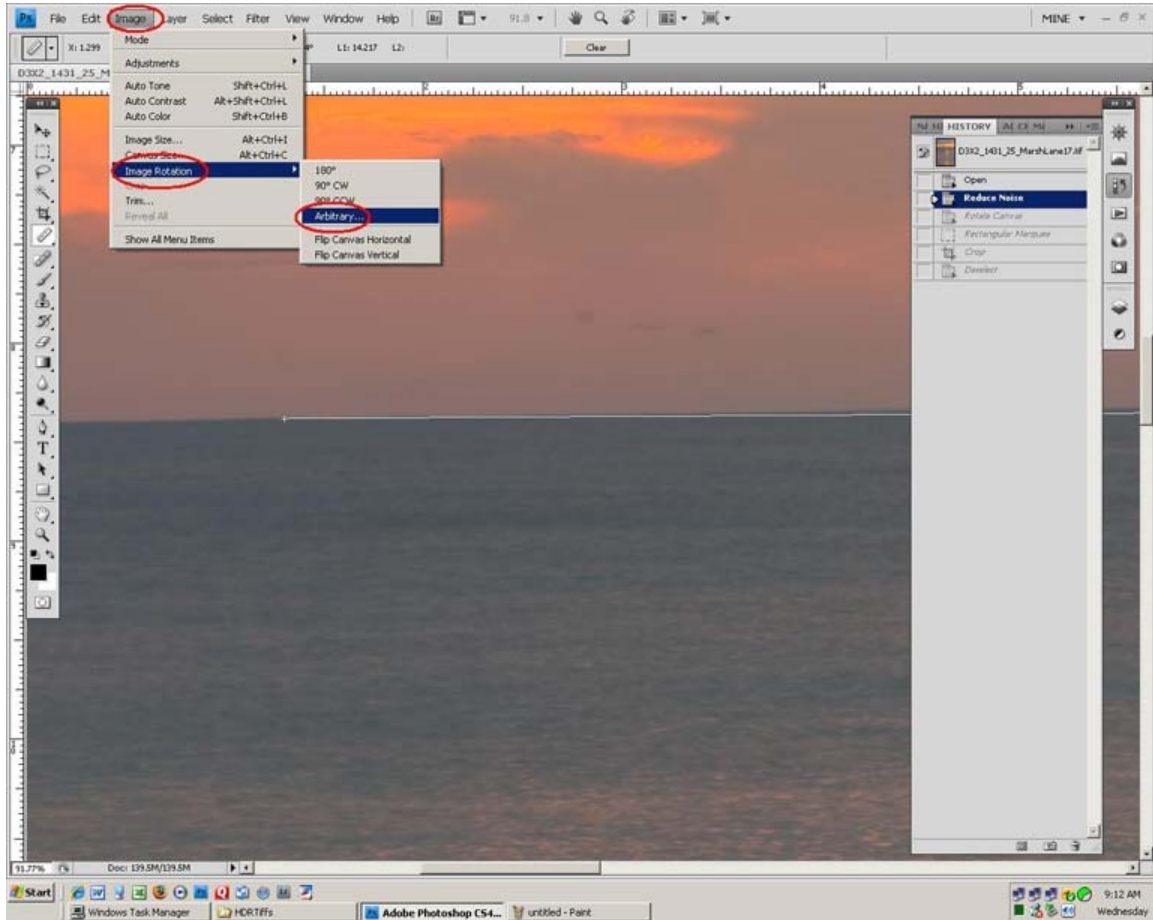


Use the mouse wheel, or zoom tool, to zoom into the image and the scroll bars (type 'f' until they are visible) to be able to see the ends of the line for very accurate placement of the line. When the cursor is moved very close to the end of the line, it will change to a move tool to enable relocating the line end point.

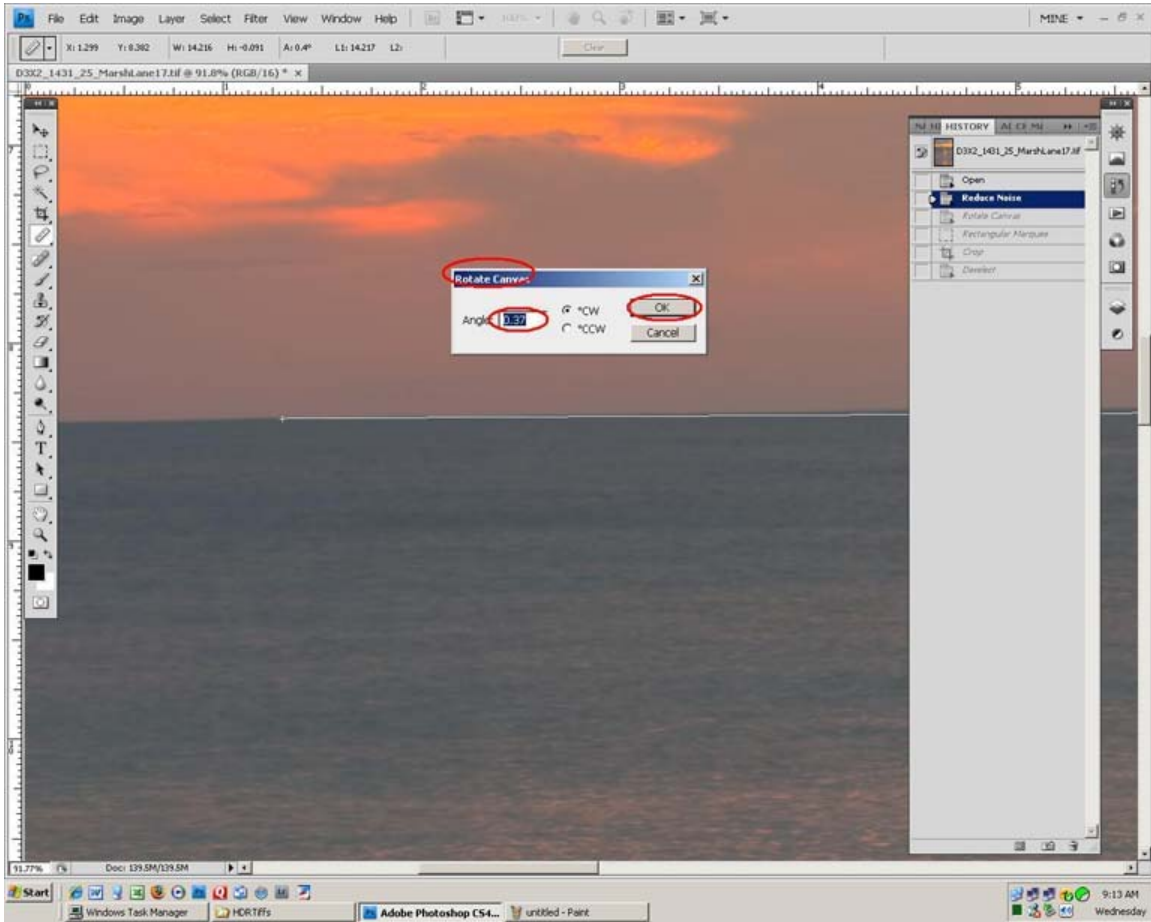


Then select

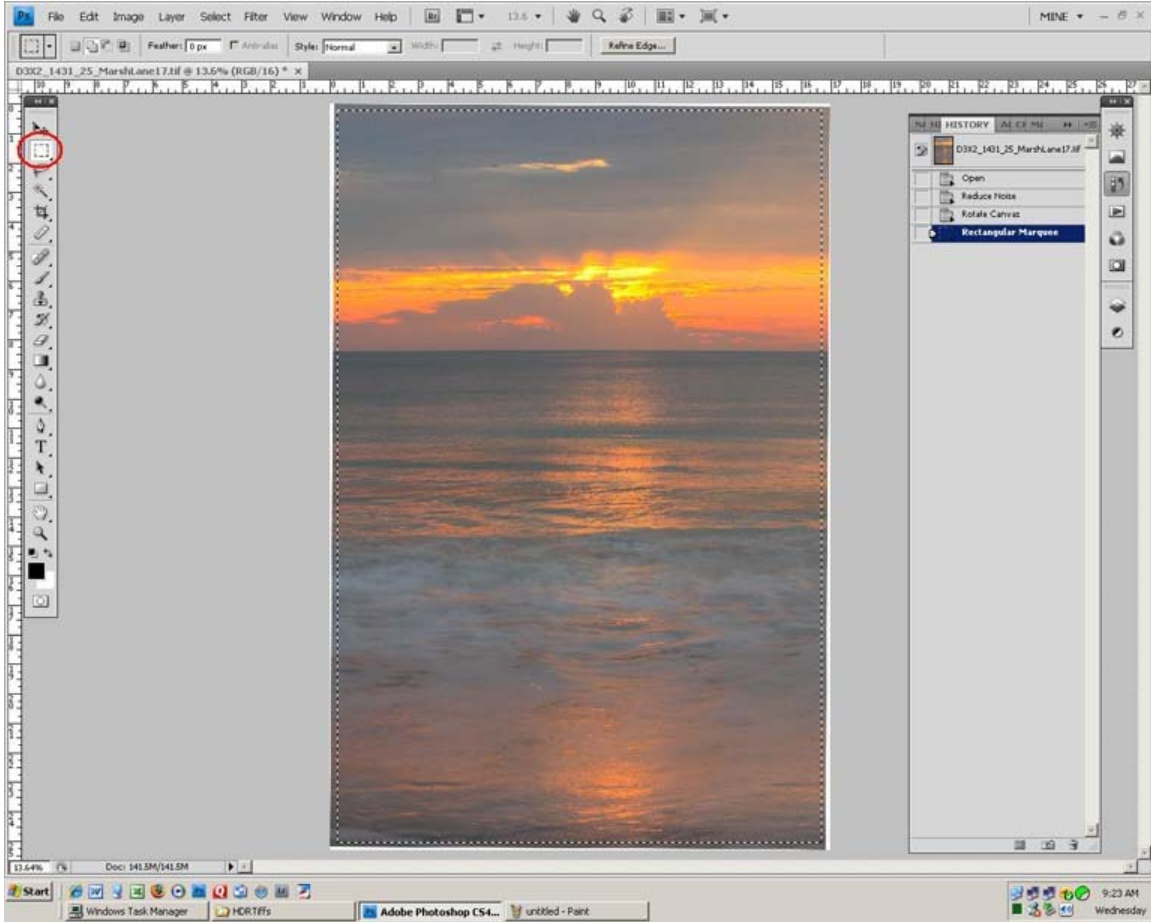
Image>Image Rotation>Arbitrary



The "Rotate Canvas" box will display how far from level your line is. If you Click OK, the picture will be rotated to make the line level. Click Cancel to skip it. I usually Cancel if it's less than 0.1 of a degree.

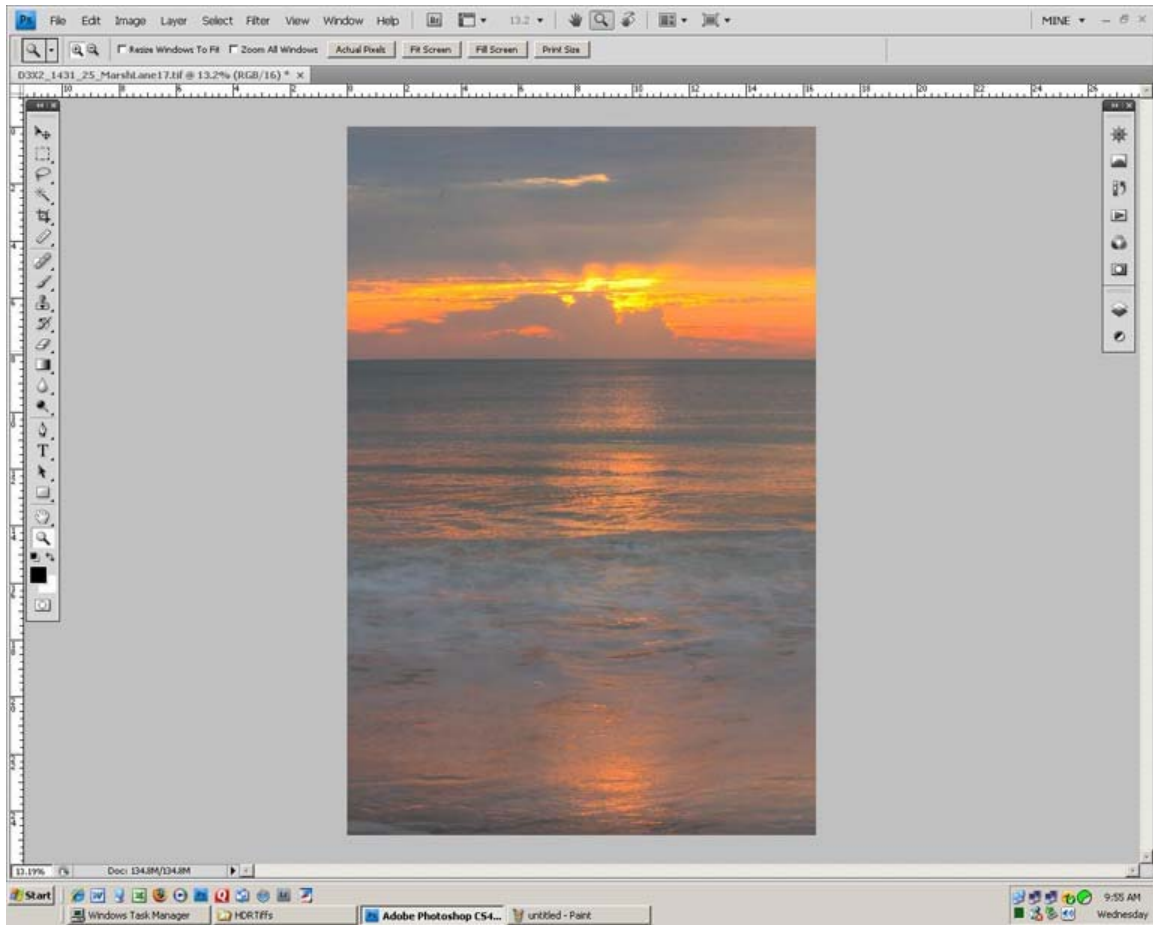


If you did rotate the photo, zoom out to see the entire image. Note that some areas of the canvas are exposed by the image rotation. Use the Square Marquee tool to select the largest rectangle possible inside the image that excludes the exposed canvas. The selected area will be enclosed by 'marching ants'.



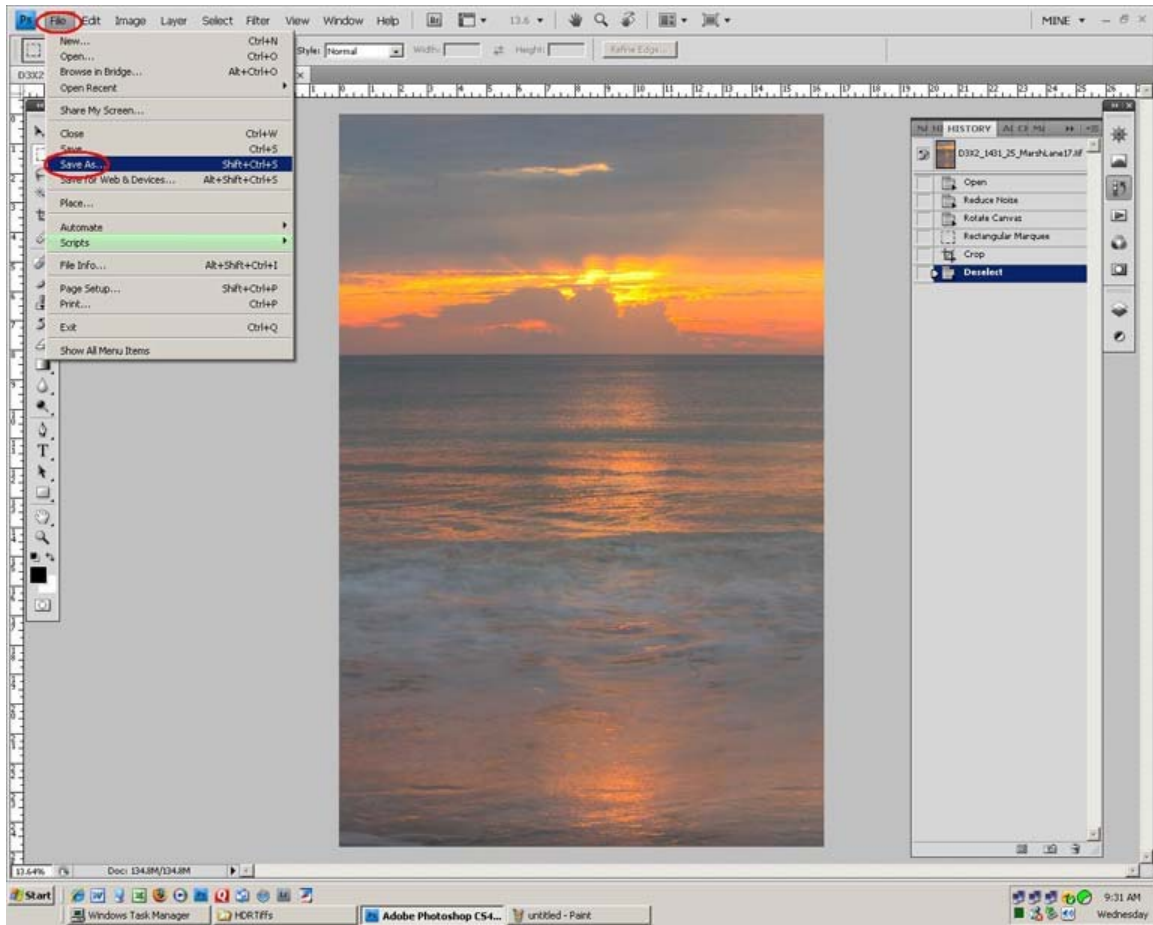
Image>Crop

The area outside the crop will be removed leaving just the leveled image.



Click outside the image to remove the marching ants.

File>Save As... To save the image to your Full Sized Images folder.



For Leveling the image, you might want to include using Guides to minimize the amount of image removed.

[www.shutterfreaks.com/Tips/Using Guides to Crop after Leveling](http://www.shutterfreaks.com/Tips/Using_Guides_to_Crop_after_Leveling)

Continue to [“100 Percent Review”](#)

If you found this tutorial of value, please consider visiting the [SHUTTERFREAKS DONATION PAGE](#). Thank you.